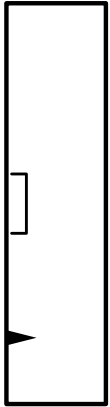
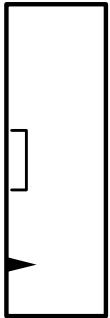


X1



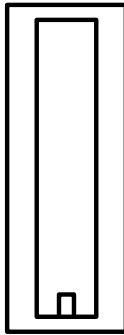
X5



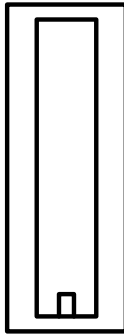
X3



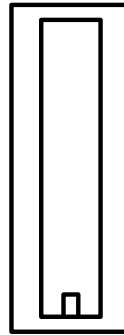
X2



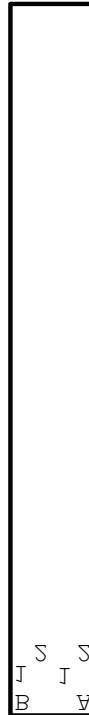
n1



ne

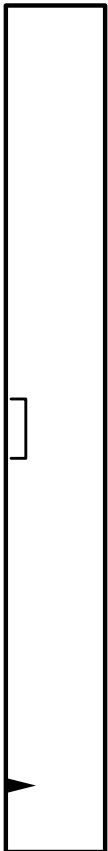


n8

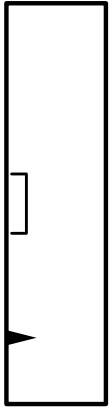


X4

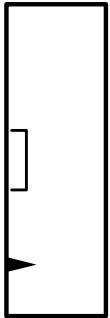




X1



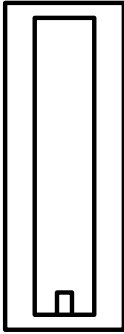
X5



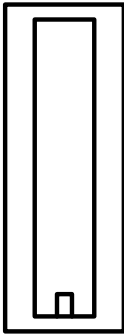
X3



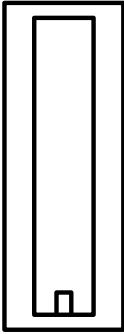
X2



n1



ne



n8



X4

1

2

3

4

D

D

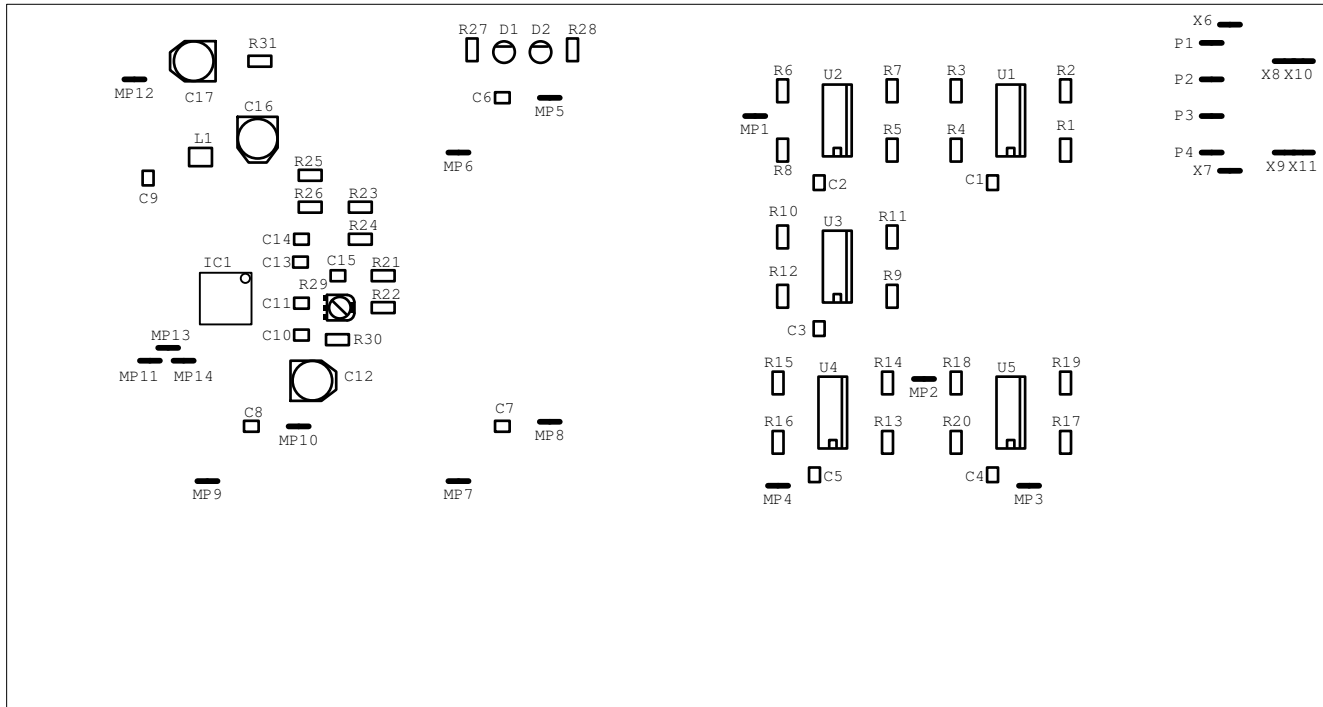
C

C

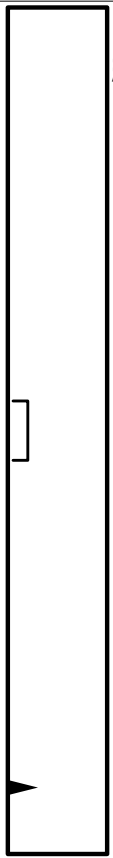
B

B

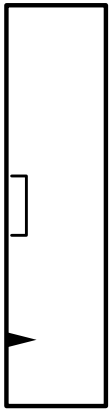
A



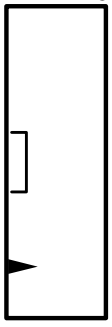
					Datum	Name	Benennung  <b>CaMonEX-Karte</b>	
				Bearb.	17.10.02	Sche		
				Gepr.	17.10.02	Giesemann		
				Norm				
					INSTITUT FUER ELEKTR. INFORMATIONSTECHNIK		Zeichnungs-Nr.	
					TU-CLAUSTHAL		ei0218	
							Blatt	
							Bl.	
1	Zust.	Aenderung	Datum	Name	Ursprung	Ers. fuer	Ers. durch	



X1



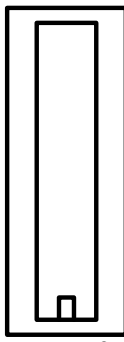
X5



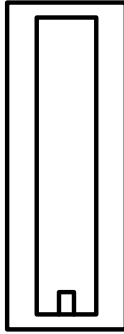
X3



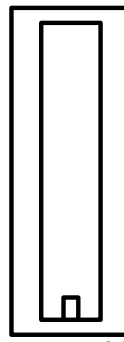
X2



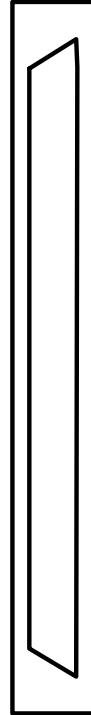
n1



n2



n8



X4