

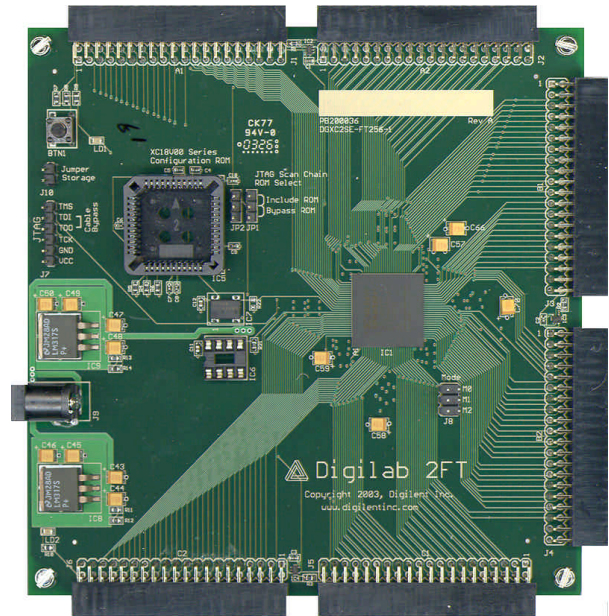
# Digilent D2-FT System Board

Featuring the Xilinx Spartan 2E 300K-gate FPGA



www.digilentinc.com

The D2FT FPGA-based development board provides an inexpensive and expandable platform on which to design and implement digital circuits of all kinds. The D2FT features a Xilinx Spartan 2E-300 FPGA in an FT256 package, proving plenty of gates and I/O's for even the most challenging embedded designs. The D2FT is the perfect platform for working with embedded processors such as Xilinx's MicroBlaze or other cores available from a variety of sites. The board is fully compatible with Xilinx's free WebPack software, and it ships with a power supply and programming cable, so designs can be implemented immediately without any further costs. It can easily mate with several existing expansion boards, so more complex designs can easily be completed.



## FEATURES AND BENEFITS

- A Xilinx XC2S300E FPGA with 300,000 gates and 350+MHz operation
- All 190 available user I/Os routed to six 40-pin expansion connectors
- A socket for a JTAG-programmable 18V02 Flash ROM
- Dual on-board 1.5A power regulators (1.8V core and 3.3V I/O)
- A surface-mount 50MHz oscillator and a socket for a second oscillator
- A JTAG programming port
- A status LED and pushbutton for basic I/O

## APPLICATIONS

- General logic and sequential circuits of all kinds
- Embedded-core processor design (e.g., Xilinx MicroBlaze)
- General digital systems and controllers
- Application specific DSP solutions

